



# Uninterrupted Power Supply

## Model:ABK-902-12-3

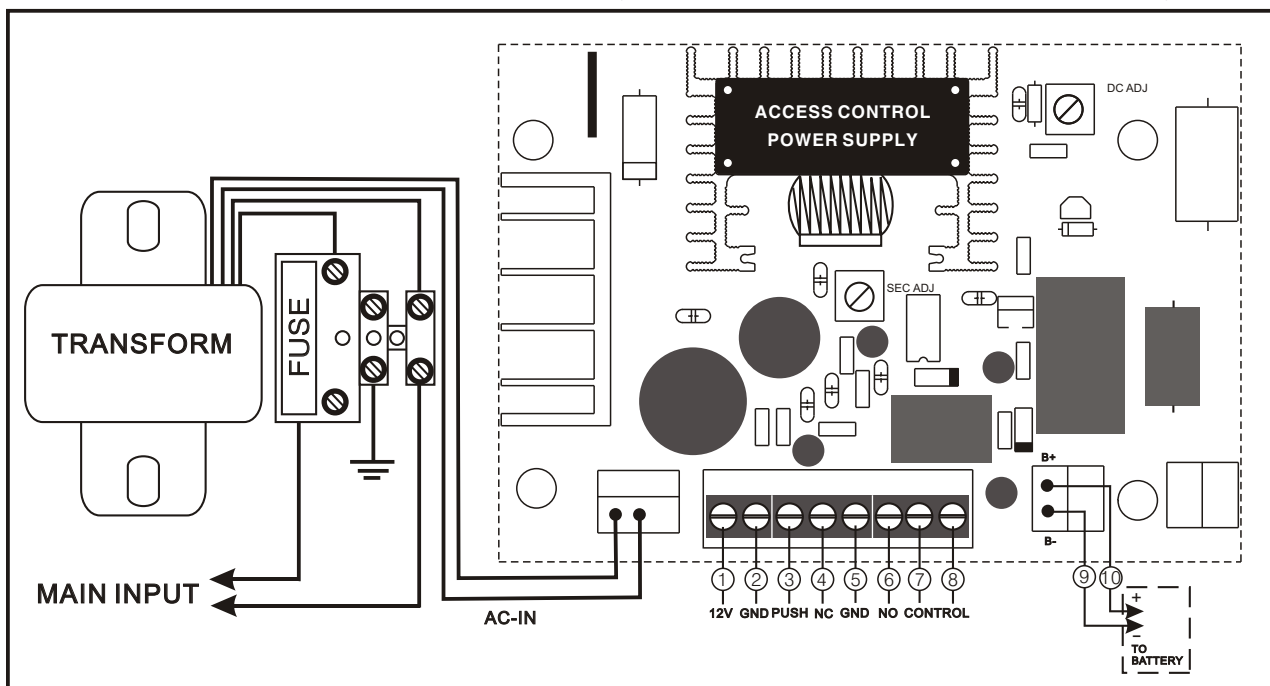
### Basic Instruction

The power supply choose original high grade component, and was produced assembly. Professional design, consummate technics, and we provide quality guarantee.

- 1、 The output voltage is 3V-15V,generally used for the electric lock, access control etc.
- 3、 Output current>3A.
- 4、 It can protect short circuit automatically.
- 5、 Dimension, 224Lx214Wx82H(mm).
- 6、 Weight:2.8kg

### Wiring Diagram

Note:This power supply can not be fitted in the occasion of dampness plammability explosive.



#### (1) Instruction of output end point contact .

- 1-2: Output Voltage 12DCV ,maximal current 3A? & 1 for anode ,2 for negative .
- 2-3: Input end of button suitable for access control or time attendance.
- 4-5: NC and COM end output 12VDC at natural time ,2-3end uncolcked voltage after contacting ,0-30 secretary ,4 for ande 5 for negative.
- 5-6: NO and COM havent. current at natural time 2-3end locked voltage after conacting (0-30)set output voltage 12VDC 5 for negative 6 for anode.
- 7-8:Button Controlled Touch off the Voltage as 12V
- 9-10:To battery 10 for anode 9 for negative.

#### (2) Timer: 0-30 second setting the proper time by adjust secretary Addition.