



YLI ELECTRONIC

Single Door Magnetic Lock with Voice Prompt Function

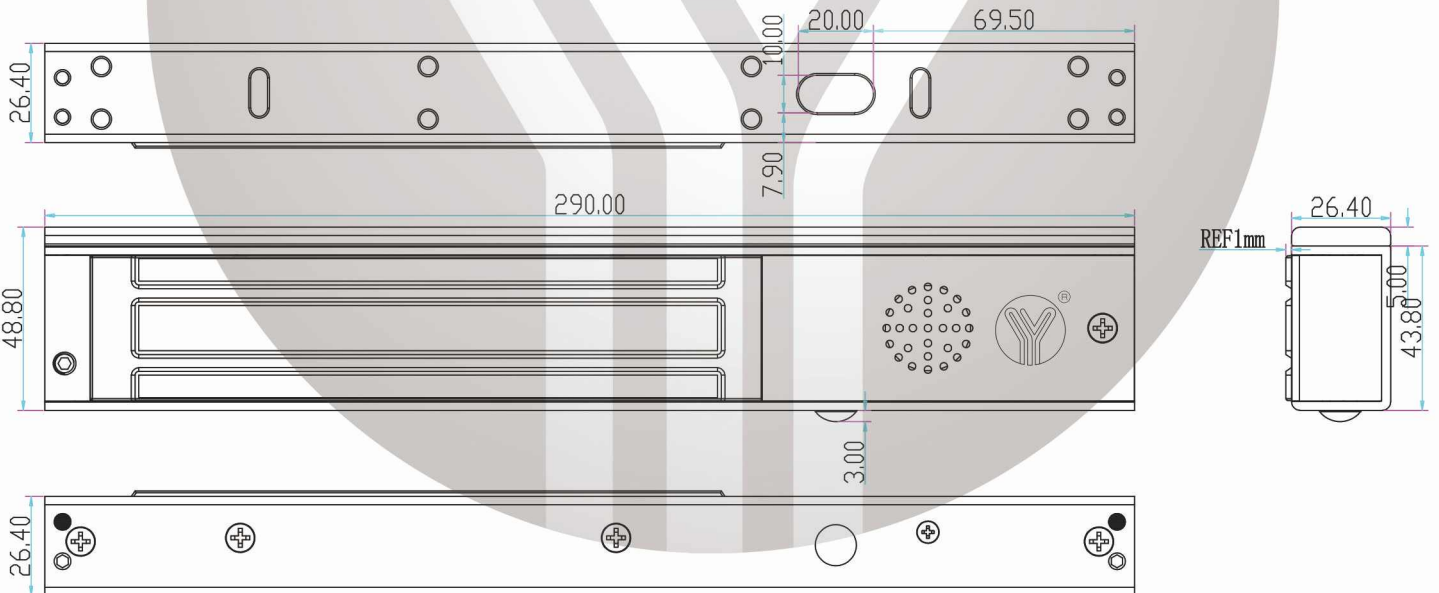
Model: YM-280(LED)-VP



Specification

Lock Size	290Lx48.8Wx27.4H(mm)
Holding Force	280kg(600Lbs)
Voltage	DC12V (Adjustable DC24V)
Current	12V/500mA±10% 24V/250mA±10%
Signal Output	Lock signal(NO/NC/COM)
LED Indication	Red shows locked ;Green shows unlocked
Time Delay	3-12sec adjustable
Voice Prompt	Voice prompt when opening the door
Suitable for	Wooden door , Glass door ,Metal door , Fireproof door
Weight	2.1kg

Diagram(unit:mm)



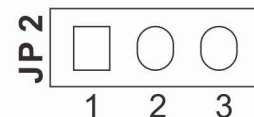
Language Settings

Voice Prompt : Chinese "The door is open" or English "The door is open"

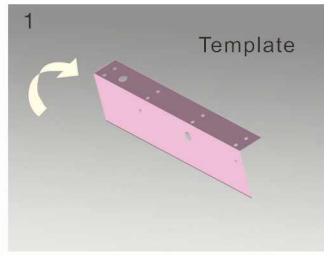
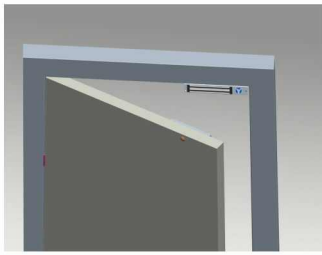
Use the jumper to select Chinese or English mode

English mode: in position 1 and 2

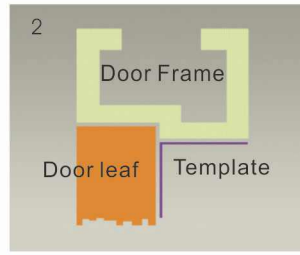
Chinese mode: in position 2 and 3



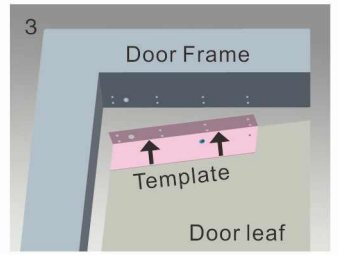
Installation



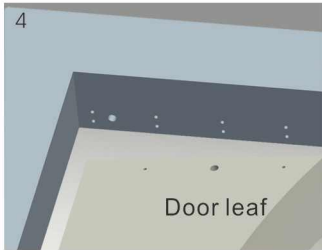
1 Fold the plate to 90° .



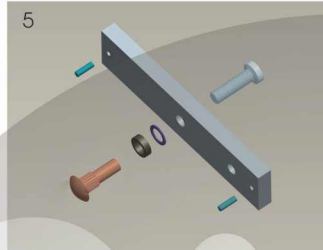
2 Close the door first, then place the upper side of template on door frame, while adjust the left side next to the door leaf.



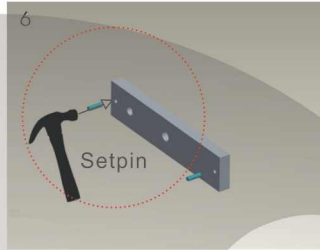
3 Mark screw positions of armature plate and magnetic lock on door leaf and door frame respectively.



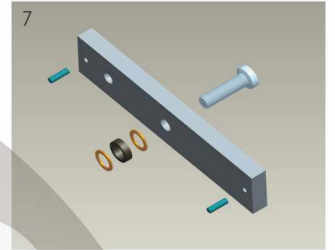
4 Drill holes based on the marked positions.



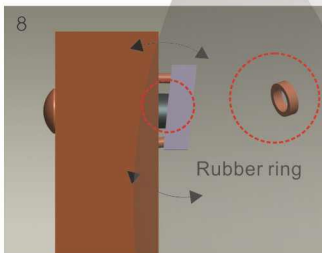
5 Make a combination based on the picture.



6 Strike the pin into the armature plate slightly (to avoid movement).



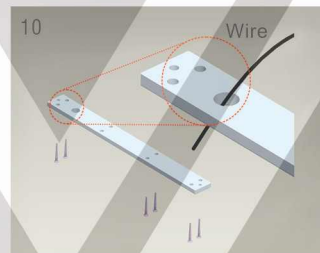
7 Make a combination based on the picture (add washer accordingly). The rubber ring must be added.



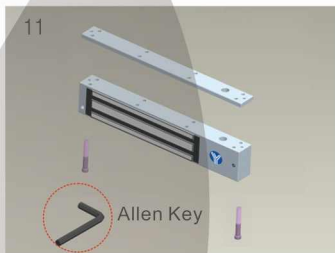
8 Place the rubber ring between armature plate and door leaf.



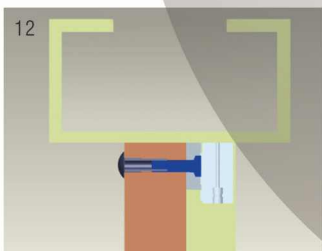
9 Use Allen key to remove the mounting plate from lock body.



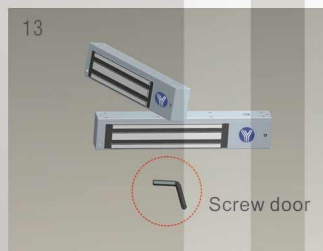
10 Fix the mounting plate on the door frame according to the holes drilled earlier.



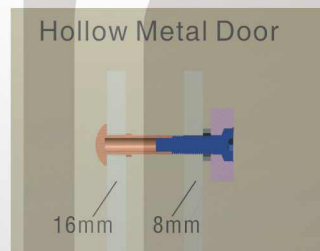
11 Use Allen key to screw the lock body on the mounting plate.



12 Close the door to test holding force. The angle between armature plate and magnetic lock can be adjusted by adding or reducing washers.

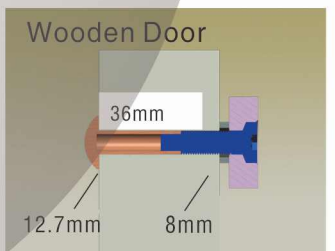


13 After all the appropriate procedures, the holding force can be maximized. Finally, fix the tamper screw.



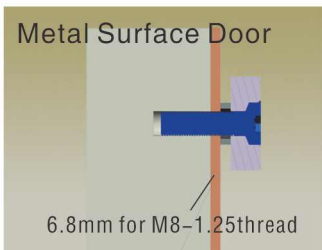
Hollow Metal Door

Drill a hole
Inside: Diameter is 8mm
Outside: Diameter is 16mm



Wooden Door

Drill a hole
Inside: Diameter is 8mm
Outside: Diameter is 12.7mm



Metal Surface Door

6.8mm for M8-1.25thread

Inside: Drill a hole diameter is 8mm folding the plastic straight pin

Notice:

Thickness of Door Leaf:

350LBS: 44mm

600LBS: 50mm

800LBS: 48mm

1200LBS: 46mm

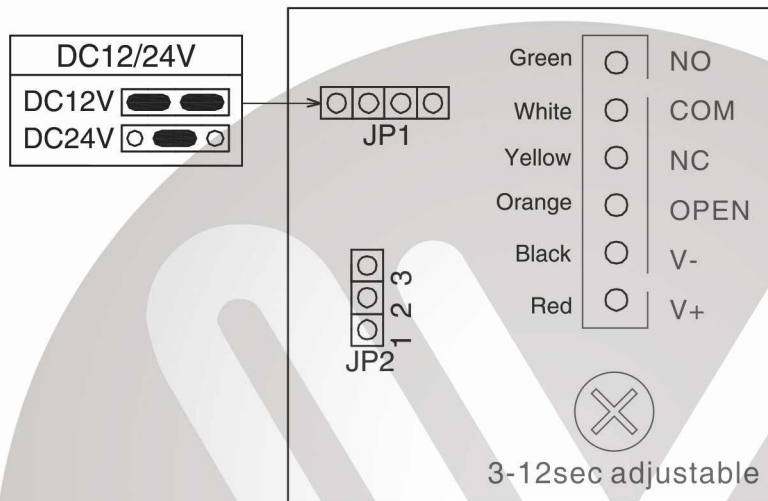
Circuit Board Diagram

A. 12VDC Input:

Required power 0.52 Amp(Minimum).
 Connect the positive(+)lead from a 12VDC power source to V +.
 Connect the ground(-)lead from a 12VDC power source to V -.
 Check jumper for 12 VDC operation.

B. 24VDC Input:

Required power 0.26Amp(Minimum).
 Connect the positive(+)lead from a 24VDC power source to V +.
 Connect the ground(-)lead from a 24VDC power source to V -.
 Check jumper for 24 VDC operation.



Wire Connection

