



YLI ELECTRONIC



Patent: No.201420531894.2

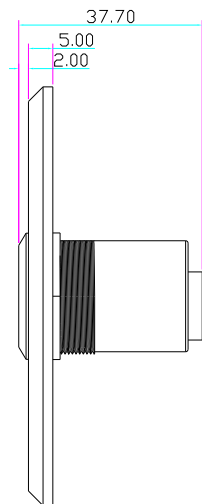
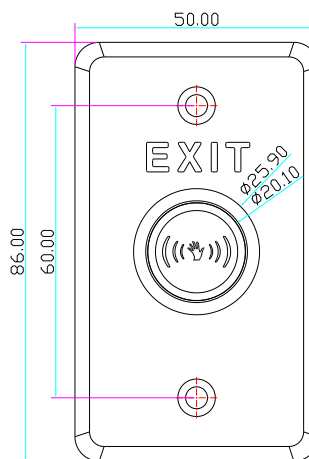
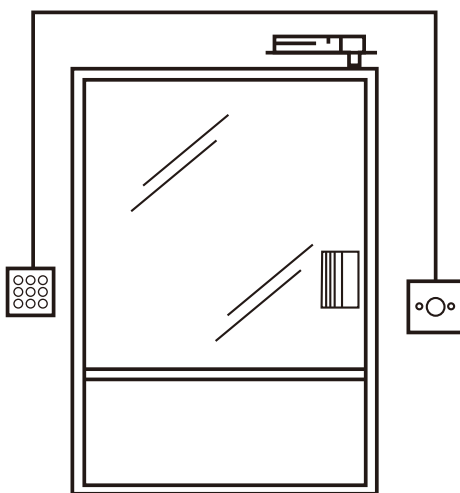
# Infrared Sensor Exit Button

## Model: PBK-806C

### Specification

- Size: 86Lx50Wx37.7H(mm)
- Input : DC12V
- Contact rating: 1A@30VDC,0.5A@125VAC
- Output contact: NO\NC\COM
- Mechanical life: 1,000,000 tests
- Suitable for door: Hollow Door
- Detection range: 4-10cm(Adjustable)
- Time delay: 0.5~25s(Adjustable)
- Operating temp: -20°C~+55°C(14-131F)
- Suitable humidity: 0-95% (relative humidity)
- LED Indicator:
  - White LED indicator: Power OFF
  - Red LED indicator: Power ON(standby)
  - Green LED indicator: Power ON(sensation)
- Material: Aluminium
- Weight: 0.12kg

### Installation & Size

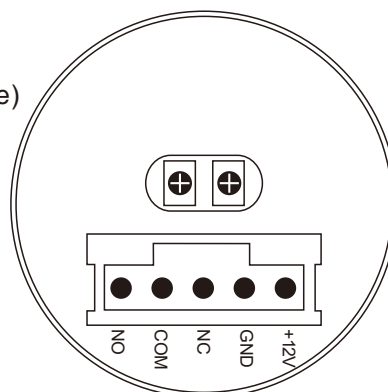


### Illustration

Detection range: 4-10cm(Adjustable)

VR1 illustration :

- ⊕ Max.detection distance
- ⊕ Min.detection distance



Time delay:0.5S~25S

VR2 illustration :

- ⊕ Min.time delay
- ⊕ Max.time delay